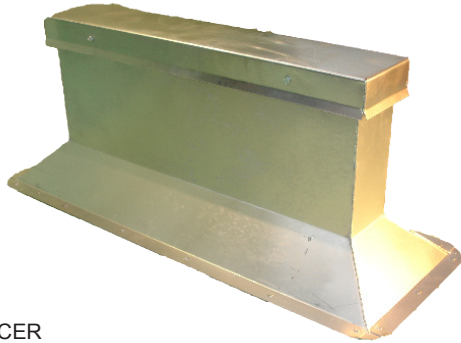


Equipment Rails

SUBMITTAL



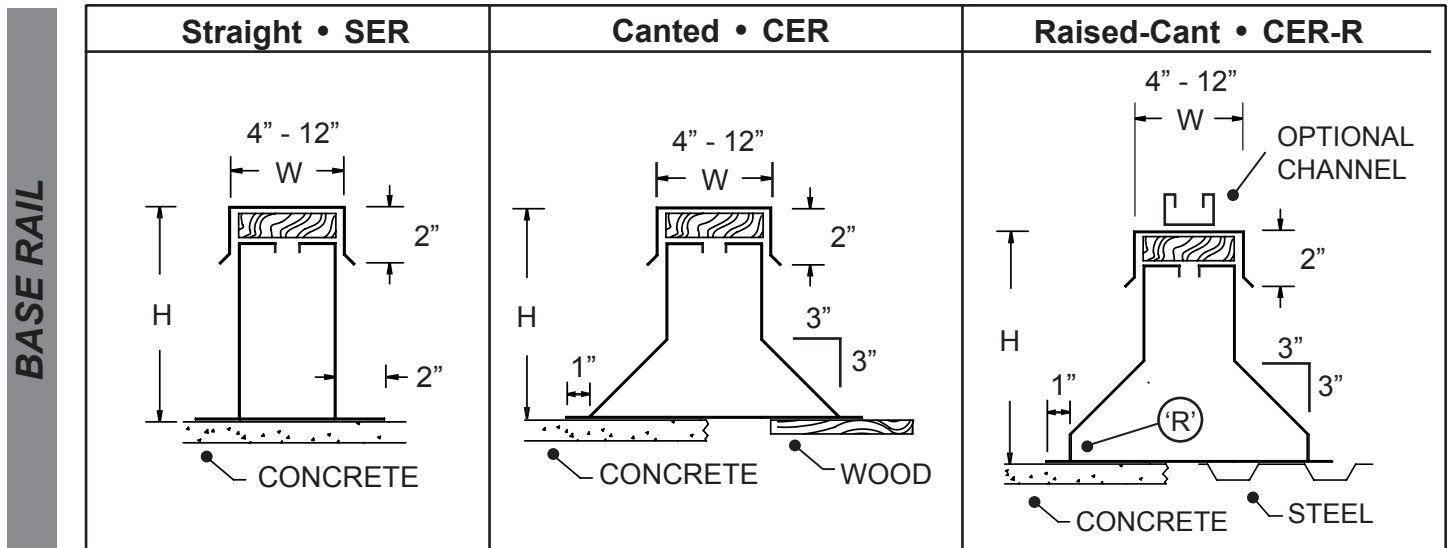
MODEL: CER

STANDARD FEATURES

- 18 GA. Welded Galvanized Metal
- 8" and 12" Standard Height (H)
- Patented Interior Bulkhead Reinforcement
- 2" x 4" Wood Nailer
- Welded Corner Seams
- Stock Lengths 2', 3', 4', 5', 6', 8', and 10'
- Raised Cant (R) = 1" - 6"

OPTIONAL FEATURES

- Aluminum or Stainless Steel Construction
- Heavier Material Gauges (10-18 GA.)
- Wood Nailers in Widths (W) up to 2" x 12"
- Chemically Treated Wood Nailers
- Unit Lengths up to 24 Feet
- Custom Heights (H)
- Construction to Fit Pitched Roofs
- Nailer Brackets
- Pipe Support Channel - *Versabar*



| QTY | TYPE | LENGTH | WIDTH 'W' | HEIGHT 'H' | RAISE 'R' | GA. | MAT. | NOTE |
|-----|------|--------|-----------|------------|-----------|-----|------|------|
| | | | | | | | | |
| | | | | | | | | |
| | | | | | | | | |
| | | | | | | | | |

Please be advised that the purpose of this submittal is to exhibit the overall dimensions of this product. Pictures nor drawings do not give entire detail of product and are not portrayed to scale. Atlantic Fabrication & Coatings reserves the right to alter this submittal without notification.



Atlantic Fabrications & Coatings • 72 Putnam Street • Paterson, NJ 07524 • 201-340-4125

WWW.ATLANTICFABRICATION.COM

ER.4.17-S